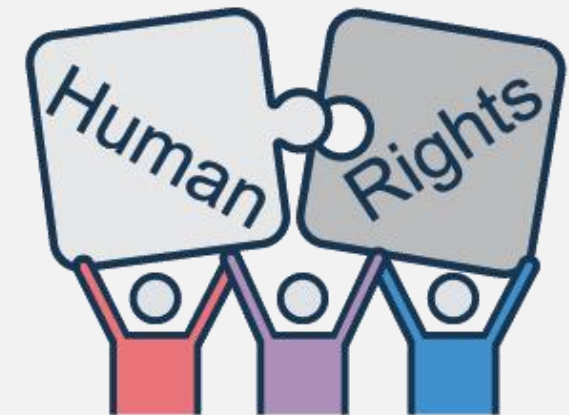


# An Introduction to (Children's) Rights Impact Assessments

British Institute of Human Rights

Eilidh Turnbull



# What do BIHR do?



**PEOPLE:** with information on human rights to change own lives. Knowledge is power!



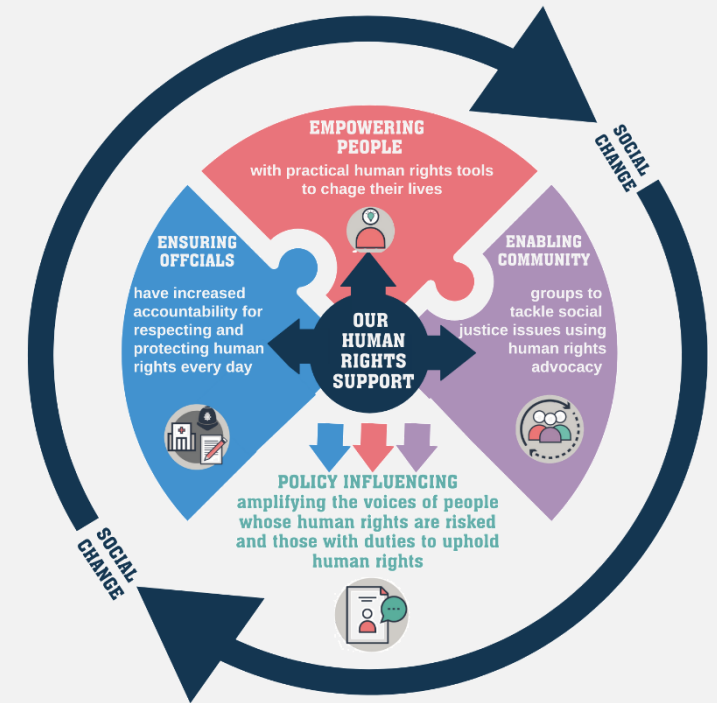
**COMMUNITIES:** to address social justice issues using human rights.



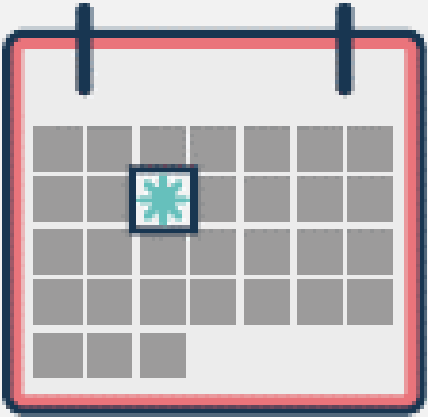
**SYSTEMS:** to increase the accountability of public bodies to respect and protect human rights in everything they do, every day.



**POLICY:** sharing the stories of people whose rights are risked to help change policy that affects them and their families.



# Today



- ✓ What are (children's) rights impact assessments?
- ✓ Why should we do them?
- ✓ How do you do them?

# What are (children's) rights impact assessments?



- A tool used to look at the potential impact on (children's) rights of a change to policy, law, practice, or a decision- both positive and negative.
- They can (and should) be done when any decision is being made by government or a public body.
- They can be used by charities, groups and organisations to raise concerns and prompt decision makers to re-look at decisions taking human rights into account.

# Why should we do them?



- Reminds decision makers of their human rights duties.
- Re-centre rights in decision and policy making.
- Pre-empting the impact on (children's) rights mean that steps can be taking to mitigate, reduce and (preferably) avoid negative impact on rights.
- As charities, groups and organisations we can provide expertise, experience and nuance.
- We can make sure the voices and experiences of the people potentially impacted are centred.

# How do you do them?

- BIHR is currently working with Together to develop a tool that can be used to support charities, groups and organisations to do CRIAs.
- Rights Impact Assessments must do the following
  1. What human rights laws apply? What are the legal duties.
  2. Analyse what rights will be impacted.
  3. Include any steps that can be taken to ensure that this decision/ law/ policy is rights respecting.
- At BIHR we use 2 tools PANEL and FAIR (we didn't invent these).





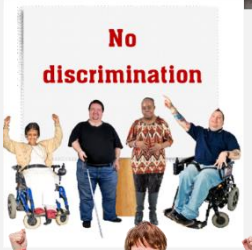
# PANEL



**Participation:** People and groups should be involved in decisions that affect their rights.



**Accountability:** People and groups should be listened to and there should be changes made if something has gone wrong. There should be clear ways to raise an issue.



**Non-Discrimination:** People and groups should be offered equal opportunities to be involved and to share their views.



**Empowerment:** Everyone should know about their rights and feel fully supported in being involved in discussions that are about their lives.



**Legality:** Decisions and process used by public services should be based on human rights law.

# FAIR model

- F** Facts- Establish the facts, what is the situation? How long has it been going on for? What is the impact on the individual(s) (involve the person/their family in these discussions)
- A** Analysis of the rights at stake- After establishing the facts, discern what rights are potentially at stake.
- I** Identify changes necessary and who is responsible for making these.
- R** Record and review.



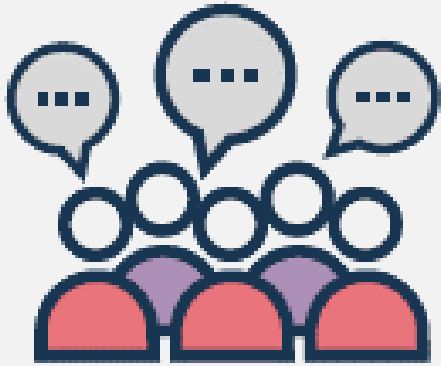
# Top Tips



- ✓ Don't be afraid to do child impact assessments!
- ✓ Upskill yourself on human rights laws (HRA and UNCRC).
- ✓ Centre the voices and experiences of children and young people.
- ✓ Keep it simple.
- ✓ Think about your audience.

# Breakout Room Questions

Breakout rooms for 10 minutes to discuss these questions. We will feedback together using Slido.



- What is your biggest challenge you face in terms of rights impact assessments/ CRIAs?
- Has your organisation managed to overcome any of these challenges? Do you have any examples of good practice?
- BIHR and Together are working on a tool that can be used to support charities, groups and organisations to do CRIAs – what 1 thing is needed/ should be included or considered?

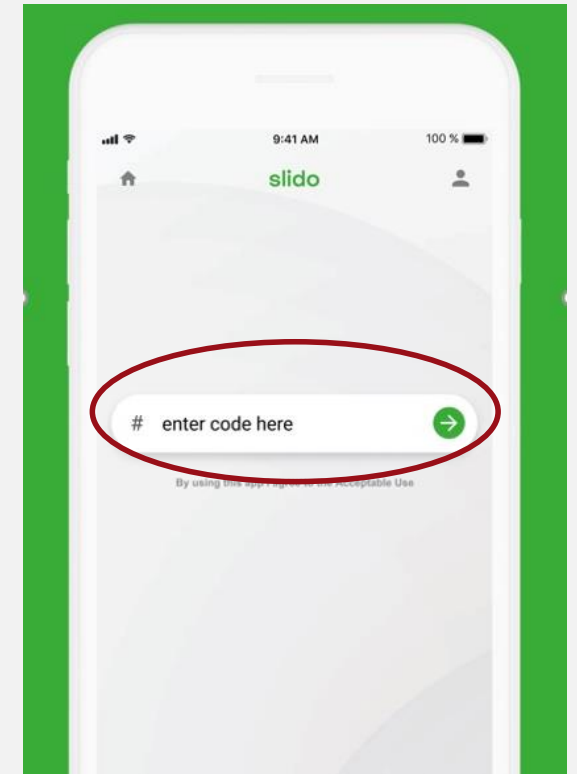
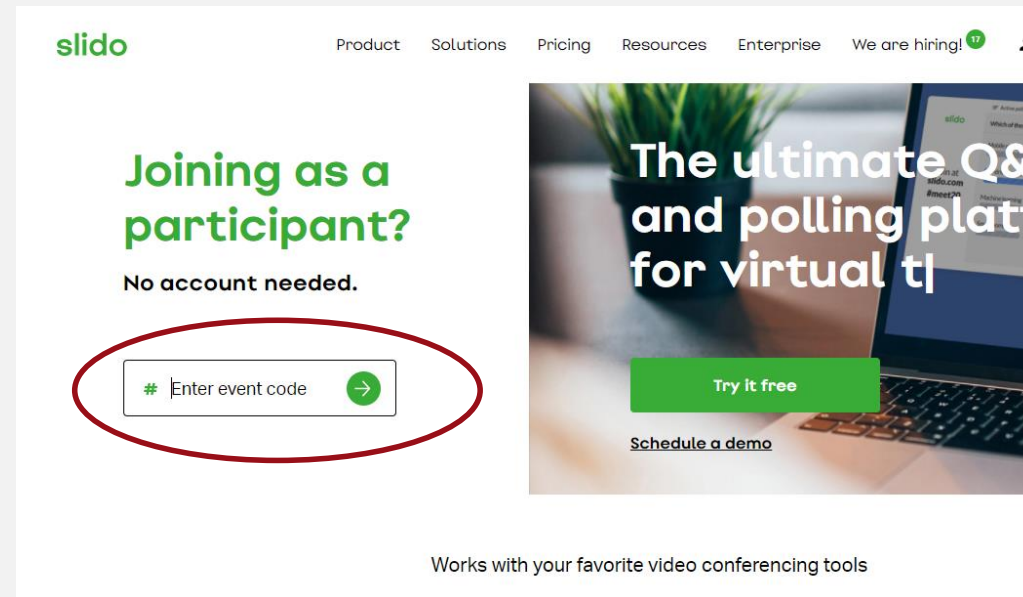
**Take some notes, we will feedback together on Slido.**

# Any questions?



# Go to Slido.com

Enter event code  
**BIHR1**



If you can't use Slido, put your answers in the Zoom chat.

slido



**What is your biggest challenge you face in terms of rights impact assessments/ CRIAs?**

① Start presenting to display the poll results on this slide.

# slido



**Has your organisation managed to over come any of these challenges? Do you have any examples of good practice?**

① Start presenting to display the poll results on this slide.

# slido



**BIHR and Together are working on a tool that can be used to support charities, groups and organisations to do CRIAs – what 1 thing is needed/ should be included or considered?**

① Start presenting to display the poll results on this slide.





If there is any thing else you want to share you can email Together at:

[mercy@togetherscotland.org.uk](mailto:mercy@togetherscotland.org.uk)



# BIHR Resources

**The British Institute of Human Rights**

bihr.org.uk



- General information on how the HRA works: <https://www.bihr.org.uk/the-human-rights-act>
- A video on how the HRA works for young people: <https://www.youtube.com/watch?v=TihvizSXzVo>
- Accessible information on all 16 rights in the HRA here: <https://www.bihr.org.uk/what-rights-do-i-have>
- Get involved in our new campaign - Why Our Human Rights Act Matters: <https://www.bihr.org.uk/blogs/why-our-human-rights-act-matters>
- Find out more about BIHR's human rights learning and support offers: <https://www.bihr.org.uk/human-rights-act-online-workshops> or email: [cmiller@bihr.org.uk](mailto:cmiller@bihr.org.uk)

